



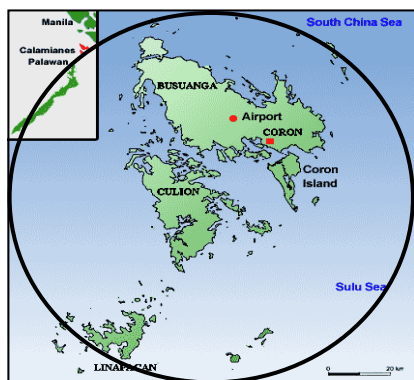
# Pathway to Resilience: A multi-stakeholder approach to tackling risks in a fragile coastal and small-island context in the Philippines

## Calamianes Resilience Network

**Partners:**  
The  
Calamianes  
Resilience  
Network  
&  
The Partners  
for Resilience



2019 CRN members tree planting during visit to the community of Malawig, Photo credits: Cordaid



### Calamianes Resilience Network (CRN)

The Calamianes Resilience Network or CRN is a multi-sectoral network deeply committed to promoting resilient communities and institutions in the Calamianes Group of Islands. The network was launched in December 2017 following multi-stakeholder coordination meetings in response to Typhoon Haiyan (local name Yolanda) which devastated the region in 2013. CRN incorporates the active participation of organizations representing the entire Calamianes group, including Busuanga, Coron, Culin and Linapacan municipalities. The Local Government Units (LGUs) of the four municipalities gave legal mandate to CRN to work together in 2018.

### We are duty bearers

Our network reflects the passion of Calamianes residents to preserve and protect our distinct yet fragile island and coastal ecosystem and communities from disaster and climate change risks. We embrace our duty and commitment to assure that our island and cultural heritage will remain intact for the support and survival of future generations. We value diversity, innovation, equality, building back better, and sensitivity to culture, gender and disability.

### Our membership

The CRN membership represents a diverse spectrum ranging from poor rural civil society organizations (CSOs) to private sector groups. We have 43 member organizations; LGUs, National Government Agencies (NGAs), academe, communities, CSO/NGOs and people's organizations operating within the Calamianes Islands Group

### Our mission

"To empower all LGUs, NGAs, communities, CSOs, academe and the private sector through collaboration, linkages, sharing of information and expertise, providing capacity development, broadening knowledge-based practices and approaches, and conduct research towards resiliency from different hazards."

*By 2030, there will be a significant lack of water for drinking and household purposes in the Calamianes islands. We have to act now as our livelihoods depend on our environment. Teodorico de Guia PHILSSA-PAGE/CRWSA*



CRN has established an inclusive resilience strengthening process, recognising the voices of Indigenous Peoples, communities, NGOs. Local groups are engaged through participation in meetings and workshops. In this way knowledge and information is trickling down from province and municipal level directly to local communities and vice-versa. In my opinion, this is a very effective practice. **Rhodora Cheryl Montoya, PFPI- USAID Fish Right**

## Strategic pathways to resiliency

To guide the development of strategies for fulfilling our mission at the local, provincial and national levels, CRN has developed seven strategic pathways to resiliency. The pathways target specific issues: Food, Water, Economic, Disaster and Climate, Ecosystem, Socio-Cultural and Institutional Resiliency.



CRN; "Seven Strategic Pathways"

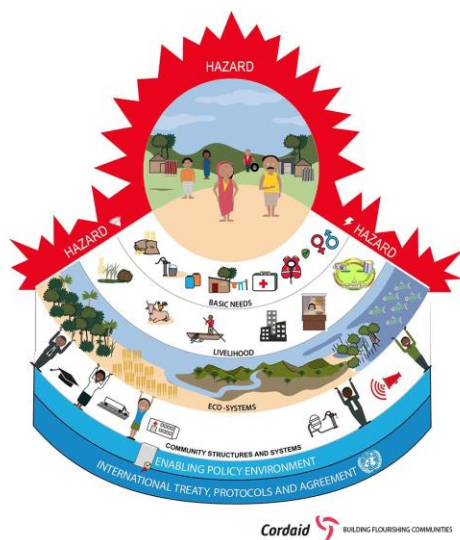
## Our structure

- An Executive Committee (Execom) to generate policy recommendations, concepts, project ideas, and other initiatives;
- A General Assembly, our highest decision-making body, to discuss and decide on Execom proposals and initiatives;
- A Secretariat responsible for coordination, organizing, establishing and maintaining linkages, and communicating with network partners and other stakeholders.
- Four Working Groups, mandated to generate action plans:
  1. Disaster Risk Reduction and Climate Change Adaptation Working Group
  2. Socio-Economic and Cultural Working Group
  3. Ecosystem Management Restoration Working Group
  4. Advocacy, Research and Information, Membership Working Group

## Integrated Risk Management (IRM)

Our work is further guided by the Integrated Risk Management or IRM approach, a set of practices and processes designed to improve decision-making and performance through integration of

- Disaster Risk Reduction (DRR): our region is at high risk from the impact of disasters.
- Climate Change Adaptation (CCA): our coastal and small-island communities have high exposure to climate change effects, we need to develop strategies to adapt to the impact of climate change
- Ecosystem Management & Restoration (EMR): the communities of the Calamianes are very dependent on our regions' fragile coastal and island ecosystems for food and livelihoods; ecotourism is an important economic activity for us and is dependent on the health of our ecosystems. We are responsible for managing the health of our ecosystems and restoring them when damaged to maintain the resilience of our region.



The Integrated Risk Management framework is used by the CRN as reference to help us describe the integrated nature of hazards, vulnerabilities, risks based on local context and capacities.

## Our work

- CRN efforts include developing plans, crafting of policies, implementing projects, advocacy and sharing of information both within and beyond the Calamianes, whilst strengthening our membership organizations. These efforts are based on a shared commitment to effectively manage disaster and climate change risks faced today and in the future through joint plans and actions. Recent priority plans include
- Development of a Calamian-wide Disaster Management Response Plan
  - Supporting the development of a Community Water Management Program Plan



fb: Calamianes Resilience Network | [secretariatcrn@gmail.com](mailto:secretariatcrn@gmail.com)





2019 CRN Execom meeting in Coron  
Photo credits: Cordaid



2018 CRN joined the coastal cleanup drive by the LGU in Coron, Photo credits: Cordaid

*What we are doing today in CRN planning meetings with the support of Cordaid has to be sustained in the future to work towards Disaster Risk Reduction. **Engineer Lopez, Municipal Disaster Risk and Reduction Management Office Coron and CRN Chairperson***

### Plans lead to action

Since the CRN Working Groups were formed, their plans have already led to a number of key actions including:

- CRNs participation in coastal cleanups
- The Socio-Economic & Cultural Working Group co-sponsored the first Calamianes Community-managed Water Summit in Coron, the event gathered the voices of community-level water and sanitation organizations through a Calamian-wide federation.
- Presentation of the results of the community-based project “Integrated Watershed Management in Tara, Malawig, Buenavista Ancestral Domain”, attended by most network members.

We anticipate continued activation of Working Group plans in the coming years as funding and other critical resources are mobilized.

### Looking ahead

2019 and 2020 will be a busy time for our network, providing the opportunity to accelerate our efforts in order to demonstrate the feasibility and effectiveness of our strategies. We plan to focus on strengthening our organization, creating a resource mobilization plan, crafting a Calamian-wide Disaster Preparedness Plan, conducting both water and watershed research, whilst reviewing the Coastal Resource Management Plans of each of our constituent municipalities. Please wish us luck.

### The Partners for Resilience

CRN is supported by local and global commitments. The Partners for Resilience (PfR) is an alliance of 5 Netherlands-based NGOs (Non-Governmental Organizations) working in 13 countries in Central America, Africa and South and South East Asia. PfR contributes to the resilience of communities by integrating climate change adaptation (CCA) and ecosystem management and restoration (EMR) into Disaster Risk Reduction (DRR). With this Integrated Risk Management (IRM) approach, communities are supported to strengthen their capacities to reduce the impact of disasters. The PfR also believe a community approach will be strengthened if the institutional environment can be made more conducive to climate and ecosystem-based DRR, and engage with civil society and government actors to apply a combined approach. The Partners for Resilience is supported by the Dutch Ministry of Foreign Affairs until 2020.

PfR’s organizational and financial support have been one of the key elements in the success to date of Calamianes Resilience Network.



fb: Calamianes Resilience Network | [secretariatcrn@gmail.com](mailto:secretariatcrn@gmail.com)



## The Network:

CRN Secretariat  
C/O Cordaid Philippines  
Coron Liaison Office  
#2 Villa Enriquez  
Subdivision,  
Sinamay, Brgy 1. Poblacion  
Coron, Palawan  
Philippines

Mobile 0917 777 6186  
Email:  
[secretariatcrn@gmail.com](mailto:secretariatcrn@gmail.com)  
#crn #resilientcalamianes

Authors:  
Mayada Koudaimi, Cordaid  
Chris Pforr

Published in:  
January 2019



MDRRMO Culion, MDRMO Busuanga,  
Saragpunta, Calait Nurunutan, CWBA,  
Tangay ang Dagat

In October 2018, the Calamianes Community-managed Water System Summit took place in Coron showing results of joint efforts by CRN on the thematic of water and food for livelihoods to private and public stakeholder in the Calamianes islands, *photo credits: Cordaid*



fb: Calamianes Resilience Network | [secretariatcrn@gmail.com](mailto:secretariatcrn@gmail.com)